

# Immersive Autostereoscopic Display for Mutual Telexistence: TWISTER I (Telexistence Wide-angle Immersive STEReoscope model I)

Yutaka Kunita Naoko Ogawa Atsushi Sakuma Masahiko Inami Taro Maeda Susumu Tachi  
The University of Tokyo  
7-3-1 Hongo, Bunkyo-ku, Tokyo 113-8656  
Japan  
kuni@star.t.u-tokyo.ac.jp

## Abstract

We present an autostereoscopic display named *TWISTER I (Telexistence Wide-view-angle Immersive STEReoscope, Model I)*, which is designed for a face-to-face tele-communication system called "mutual telexistence." By rotating display units that consist of LED arrays and a barrier around a viewer, *TWISTER I* can display panoramic stereoscopic images that can be observed without the use of special eyewear. This "glassless" feature is essential for applying this apparatus to mutual telexistence because eye contact is important in non-verbal communication.

## 1 Introduction

Development of a system that allows for face-to-face communication between remote users has long been a challenging concept. Our team is also studying such a system called "mutual telexistence." [7],[8],[13]. The concept is shown in Figure 1. Although there are still some technical problems to be solved, this paper focuses on a visual display.

The visual display is required to provide realistic three-dimensional images that enables users to feel as if they were sharing an environment. Recently, some studies employ immersive projection technology (IPT) such as CAVE[3] that can generate wide view-angle stereoscopic views. However, this kind of display demands that viewers wear special eyeglasses that obscure the viewer's eyes and prevents eye contact between its users. This situation is undesirable, since facial expressions, particularly around the eyes, are an essential part of face-to-face communication. On the other hand, conventional autostereoscopic (glassless stereoscopic) displays do not have a viewing-angle that is sufficient for mutual telexistence in a situation such as, for ex-

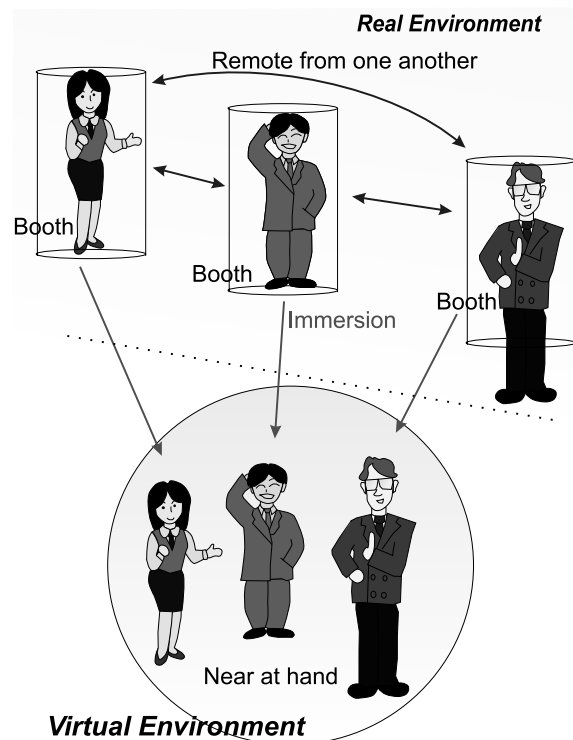


Figure 1. Concept of Mutual Telexistence

ample, a cocktail party. Not unlike a round-table discussion, many other participants may surround a participant. Thus, a wide-angle, stereoscopic display that is not dependent on special eyewear is optimal for mutual telexistence.

To satisfy the demands noted above, a novel autostereoscopic display system was constructed. It is called *TWISTER I (Telexistence Wide-angle Immersive STEReoscope, Model I)*. By mechanically rotating display units that consist of LED arrays and a barrier around a viewer, *TWISTER I* can display very wide-angle stereoscopic im-

ages that can be perceived without the use of special eye-wear.

## 2 Related Work

Parallax barrier is one of the most common methods for autostereoscopic display. This method seems to have been invented in the early 20th century by F. E. Ives and has been studied by several researchers[10]. The method makes use of striped images for each eye. The images are spatially multiplexed on a screen, and very fine vertical slits are located between the observer and the screen. By viewing these images through vertical slits, only the left images can be observed with the left eye and the right images with the right eye. Displays that use lenticular lenses instead of slits [6],[9] and place slits between a backlight and a liquid crystal panel [5] are also in this category.

However, there are two well-known disadvantages to such displays. First, the eye position of the observer is strictly limited; thus, head motion is restricted to a few fixed positions or a relatively narrow region. Secondly, horizontal spatial resolution of the screen is divided so that each eye perceives only one half of the screen.

To address the first problem, some displays adjust the positions of lenticular lenses [2] or light sources [11] according to the observer's head motion; however, there seems to be room for improvement of the tracking speed.

On the other hand, some display systems employ a periodic barrier motion that is not similar to the tracking motion mentioned above. Since a dynamic barrier motion works as a time-multiplexor, each eye perceives the whole screen. Records say the cyclostereoscope by F. Savoye was demonstrated at Luna Park in Paris in 1949. Recently, the cyclostereoscope has been revived[1]. The apparatus consists of a screen with a rotating fence around it, and the left and right images are projected from outside. Because a fence horizontally interlaces both of the projected images, the viewers outside the rotation can see stereoscopic images through the apertures in the fence. If the rotating speed were fast enough, the viewers would perceive no flicker. Although the cyclostereoscope provides only a pair of parallax images, TAO (Telecommunications Advancement Organization of Japan) constructed a similar display capable of multiple parallax images [4]. Also, Homer B. Tilton produced the parallaxscope in which a vertical slit scans horizontally in front of a CRT (cathode-ray tube) [14]. Furthermore, some recent experiments employ an electronic barrier instead of a mechanical one [12].

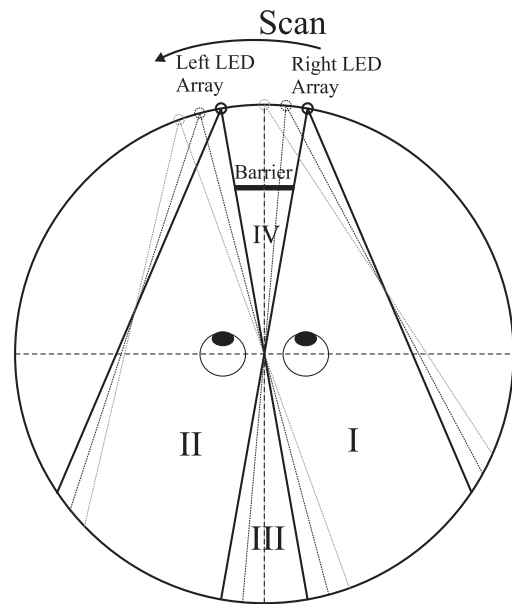


Figure 2. Principle of Movable Parallax Barrier Method (Top View)

## 3 Principle

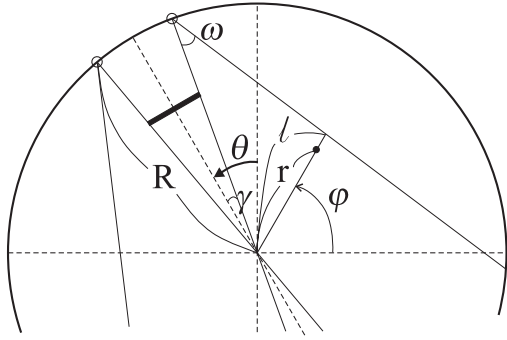
### 3.1 Movable Parallax Barrier

Figure 2 shows the method *movable parallax barrier* that we have used. The basic idea is to scan a pair of directional light sources, each of which is visible to one eye only. To produce directional light sources, a pair of vertical LED arrays and a vertical barrier are combined. By rotating them around the observer as a single display unit, the apparatus can present cylindrical images that are separately perceived by each eye. Thus, the observer can experience wide-angle stereoscopic images without special eyewear.

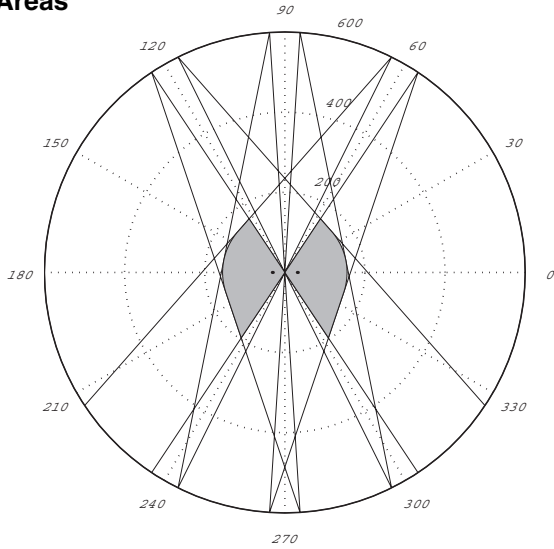
In Figure 2, the right and left eyes need to be in region I and II, respectively, for stereoscopic viewing. Region III is a "cross-talk" region, where both images are visible, and both images are visible in region IV. By design, regions I, II, and IV intersect at the center of the circle so that the apparatus permits a relatively wide range of head movement.

### 3.2 Viewing Areas

Each eye should be located in a specific area as the display unit rotates. First, let  $R$  be the radius of a display,  $\omega$  the beam angle of a light source,  $\gamma$  the viewing-angle of a barrier from the center, and  $\theta$  the rotating angle of a display unit, as shown in Figure 3. The condition in which only the



**Figure 3. Variables for Calculation of Viewing Areas**



**Figure 4. Calculated Viewing Areas. The black dots indicate typical eye positions (interocular distance: 6.25cm).**

light for the right eye is visible at the position  $(r_0, \phi_0)$  is

$$r_0 \leq l(\theta, \phi_0) \quad (1)$$

,where  $l(\theta, \phi)$  is the length between the center of the circle and region I at angle  $\phi$ . Then, if a display unit moves within the range  $-\Delta\theta \leq \theta \leq \Delta\theta$ ,  $r_0$  must satisfy the following condition:

$$r_0 \leq \min_{-\Delta\theta \leq \theta \leq \Delta\theta} l(\theta, \phi_0) \quad (2)$$

By substituting  $l(\theta, \phi) = l(0, \phi - \theta)$ ,

$$r_0 \leq \min_{-\Delta\theta \leq \theta \leq \Delta\theta} l(0, \phi_0 - \theta) \quad (3)$$

$$= \min_{\phi_0 - \Delta\theta \leq \phi \leq \phi_0 + \Delta\theta} l(0, \phi) \quad (\text{where } \phi \equiv \phi_0 - \theta) \quad (4)$$

Furthermore, by using

$$l(0, \phi) = \begin{cases} 0 & -\pi \leq \phi < -\frac{\pi}{2} + \gamma \\ R & -\frac{\pi}{2} + \gamma \leq \phi < -\frac{\pi}{2} + 2\omega - \gamma \\ R \cdot \frac{\sin \omega}{\sin(\frac{\pi}{2} + \phi + \gamma - \omega)} & -\frac{\pi}{2} + 2\omega - \gamma \leq \phi < \frac{\pi}{2} - \gamma \\ 0 & \frac{\pi}{2} - \gamma \leq \phi < \pi \end{cases} \quad (5)$$

(when  $\omega > \gamma$ ), we obtain the region shown in Figure 4 that satisfies equation (4). In Figure 4, the actual parameters of TWISTER I ( $R = 600[\text{mm}]$ ,  $\omega = 15^\circ$ ,  $\gamma = 3.63^\circ$ ,  $\Delta\theta = 30^\circ$ ) are applied. The black dots indicate typical eye positions (interocular distance: 6.25cm).

### 3.3 Time-Space Tradeoff

Let  $f[\text{Hz}]$  be the frame rate of the images,  $n$  the pixels per round,  $F[\text{Hz}]$  the driving frequency of the light source,  $N$  the number of the display units and  $\nu[\text{rad/s}]$  the angular velocity of the display units.  $\frac{1}{f}$  seconds after one display unit passes at a point on the circle and refreshes the pixel there, the next display unit passes the same point and refreshes the pixel. As the angle between the display units is  $\frac{2\pi}{N}$ ,

$$\frac{1}{f} = \frac{2\pi}{N} \cdot \frac{1}{\nu} \quad (6)$$

Also, the display unit takes  $\frac{2\pi}{\nu}$  seconds to go around and the light source refreshes  $F$  times per second. Therefore,

$$n = F \cdot \frac{2\pi}{\nu} \quad (7)$$

Then, by equation (6),(7),

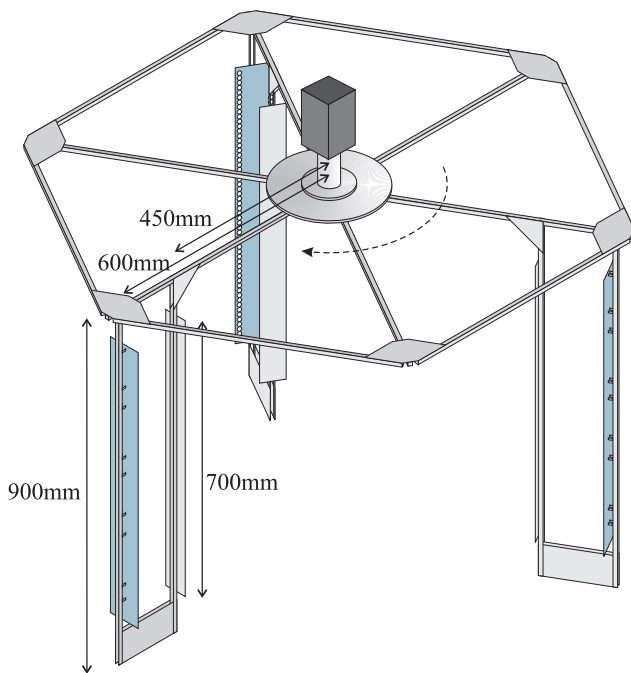
$$f \cdot n = F \cdot N \quad (8)$$

is established. This indicates a tradeoff relationship in which the product of the resolutions of time and space is constant. The right side indicates a situation in which the display units are static. When we use an LED as a light source,  $F$  can be much bigger than the frame rate required by humans; whereas, very fine slit processing such as that used in a conventional parallax barrier is required to get enough  $N$ . However, sufficient time resolution can be compensated for deficient space resolution by dynamically scanning the display units.

## 4 Implementation

### 4.1 Specification

Figure 5 shows an overview of the first prototype TWISTER I (Telexistence Wide-angle Immersive STEReoscope, Model I). Display units are attached to a hexagonal frame that is rotated by an AC servomotor. The hexagonal



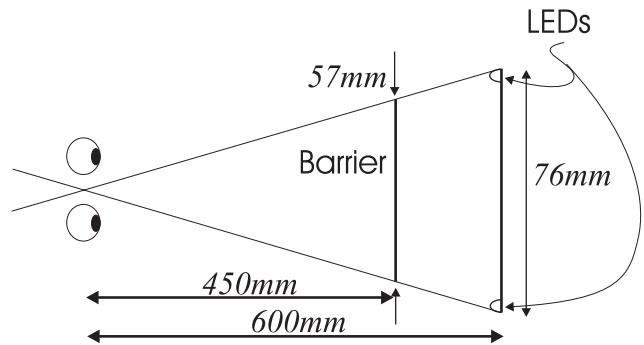
**Figure 5. Overview of TWISTER I (Telexistence Wide-angle Immersive STEReoscope, Model I)**

frame is made of aluminum, which is light and solid enough to rotate about 1 ~ 3 rounds per second. To each vertex of this frame, a display unit could be attached; however, three of them have been attached in every other vertex to date.

The AC servomotor (Oriental Motor KBLM460GD-A) rotates this frame at a rate of about one round per second (60rpm). Since the rated speed is 3000rpm, a 10:1 gearbox is attached to slow the speed.

Each display unit consists of two columns of LED arrays and a thin aluminum barrier. One vertical line has 128 red LEDs, 32 of which are controlled by one microcomputer. A vertical view angle is  $57^\circ$  when the observer is located at the center. Horizontally, 960 dots can be displayed per round, although the view-angle and visible regions mentioned previously have a tradeoff relationship. To date, 160x128 monochrome images ( $60^\circ \times 57^\circ$ ) are restored in the EEPROM on the microcomputer and displayed. Three display units are rotated at one round per second. Thus, the refresh rate of the images is three frames per second by equation 6.

The layout of the LED arrays and the barrier is shown in Figure 6. The line connecting the edges of the barrier and the LED intersects at the center of the apparatus. This arrangement contributes to minimizing a *cross stalk* region where both LED arrays are visible.



**Figure 6. Layout of the LED arrays and the barrier**

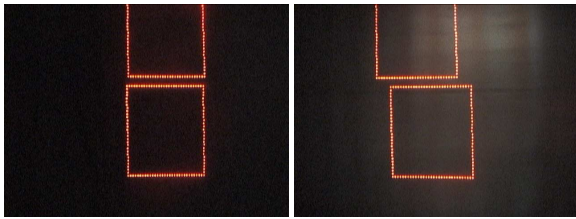


**Figure 7. Photograph of TWISTER I**

## 4.2 Experiment

In Figure 7, an observer views stereoscopic images without eyewear. A helmet is worn for safety and does not contribute to the stereoscopic view; however, a transparent acrylic guard will be used in the future. Due to mechanical barrier scanning, the left and right images are completely isolated; thus, a so-called *ghosting* artifact that is common in polarization-based stereoscopic displays is hardly observed. Moreover, the barrier is not perceivable because of its speed. Also, the rotation of the frame is quite stable and quiet so that observers can enjoy noticeably clear stereoscopic images.

As an experiment, the images shown in Figure 8 were displayed. Since the disparity of the lower square is larger than that of the upper one, the lower one should be perceived as deeper. When we tested the 10-male/female subjects, all of them correctly answered which square is the



**Figure 8. Stereoscopic test pattern. The left image for the left eye, the right image for the right eye, respectively.**

deeper.

## 5 Future Work

There are short- and long-term plans for the continuation of this study.

Short-term work will focus on improving the basic quality of TWISTER as a three-dimensional display. First, full-color displays are indispensable for realism. This might be achieved by replacing the current monochrome red LEDs with full-color LEDs; however, rotating separate red, green, and blue LEDs would be a lower-cost implementation. If the rotation speed is fast enough, the observer will perceive mixed color. Second, the display of images in motion is also essential. To achieve this, we have to transmit image data to rotating display units instead of restoring them in the on-chip memory of a microcomputer. For our next prototype TWISTER II, we will employ wired data transmission using a slip ring, although wireless transmission is an attractive choice. Third, head tracking would be necessary to widen a visible area and provide motion parallax. Although the visible area of the current system is relatively wide compared to conventional parallax barrier displays, an observer's motion is restricted near the center of the booth. Also, motion parallax is crucial for providing three-dimensional space as well as a stereoscopic view. Lastly, of course, we cannot neglect safety. Currently, some users would be frightened by aluminum barriers rotating at relatively fast speeds in front of their faces without a guard. Therefore, we will place a large acrylic cylinder in-between the observer and the rotator.

Besides all these specific improvements, we intend to add a new element to this apparatus. In our mutual teleexistence, one user sees other users and is simultaneously seen by them. To satisfy this bi-directional nature, the booth will display stereoscopic figures of the other users and capture the image of the user within. This can be achieved by placing cameras between display units and rotating them. Furthermore, once these images from various viewpoints

around the user are obtained, a new view can be constructed from an arbitrary viewpoint in real-time by our previously proposed technique[7],[8]. When each booth provides a reconstructed view from a viewpoint in a virtual environment, this situation achieves *mutual teleexistence*.

## 6 Conclusion

This paper presented a new autostereoscopic display TWISTER I (Teleexistence Wide-angle Immersive STEReoscope, Model I), which can provide wide-angle stereoscopic images without requiring the use of eyewear. The implementation of this apparatus is simple. It requires rotating display units consisting of two columns of LEDs and a barrier around the observer. In addition, if cameras are rotated together, the human figure can be captured simultaneously from all directions. Although the current prototype is immature, the feasibility of mutual teleexistence can be demonstrated.

## Acknowledgement

The authors have benefited from the technical advice of colleagues from the Tachi Lab. Yasuyuki Yanagida, Naoki Kawakami, and Dairoku Sekiguchi have been especially helpful. Also, thanks are due to T. K. Treadwell of The Institute for Photographic Research for providing the authors with a copy of an article about the cyclostereoscope.

## References

- [1] R. Blum. The cyclostereoscope. *STEREO WORLD*, 10(2):29–31, 1983.
- [2] R. Börner, B. Duckstein, O. Machui, H. Röder, T. Sinnig, and T. Sikora. A family of single-user autostereoscopic displays with head-tracking capabilities. *IEEE Trans. Circuits and Systems for Video Technology*, 10(2):234–243, 2000.
- [3] C. Cruz-Neira, D. J. Sandin, and T. A. DeFanti. Surround-screen projection-based virtual reality: The design and implementation of the cave. In *SIGGRAPH'93 Conference Proceedings*, pages 135–142, 1993.
- [4] T. Endo, Y. Kajiki, T. Honda, and M. Sato. Cylindrical 3D video display observable from all directions. In *Proc. SPIE*, volume 3957, pages 225–233, 2000.
- [5] G. Hamagishi, M. Sakata, A. Yamashita, K. Mashitani, E. Nakayama, S. Kishimoto, and K. Kanatani. Stereoscopic displays without special glasses. In *SID95 Applications Digest*, pages 75–78, 1995.
- [6] H. Isono and M. Yasuda. 50-inch autostereoscopic full-color 3-D TV display system. In *Proc. SPIE*, volume 1669, pages 176–185, 1992.
- [7] Y. Kunita, M. Inami, T. Maeda, and S. Tachi. Prototype system of mutual tele-existence. In *ACM SIGGRAPH '99 Conference Abstracts and Applications*, page 267, 1999.

- [8] Y. Kunita, M. Inami, T. Maeda, and S. Tachi. Real-time rendering system of moving objects. In *Proceedings of the 1999 IEEE Workshop on Multi-View Modeling & Analysis of Visual Scenes (MVIEW'99)*, pages 81–88, 1999.
- [9] H. Morishita, H. Nose, N. Taniguchi, K. Inoguchi, and S. Matsumura. Rear cross lenticular 3D display without eye-glasses. In *Proc. SPIE*, volume 3295, pages 193–202, 1998.
- [10] T. Okoshi. *Three Dimensional Imaging Techniques*. Academic Press, 1976.
- [11] K. Omura, S. Shiwa, and F. Kishino. Development of lenticular stereoscopic display system: Multiple images for multiple viewers. In *SID95 Digest*, pages 761–764, 1995.
- [12] K. Perlin, S. Paxia, and J. S. Kollin. An autostereoscopic display. In *SIGGRAPH2000 Conference Proceedings*, pages 319–326, 2000.
- [13] S. Tachi, T. Maeda, Y. Yanagida, M. Koyanagi, and H. Yokoyama. A method of mutual tele-existence in a virtual environment. In *Proceedings of ICAT 96*, pages 9–18, 1996.
- [14] H. B. Tilton. Nineteen-inch parallactiscope. In *Proc. SPIE*, volume 902, pages 17–23, 1988.